

MEMBER SCHEDULE

CODE: MODULE DETAILS

- EWS - External Weather Stops (70mm x 35mm x 2700mm)
- EAS - External Alcove Stops (70mm x 35mm x 2400mm)
- EWSV1 - External Window Stops Vertical (70mm x 35mm x 1500mm)
- EWSV2 - External Window Stops Vertical (70mm x 35mm x 2600mm)
- EWSH - External Window Stops Horizontal (70mm x 35mm x 3600, 4800mm)
- IWAV - Internal Window Arch, Stops Vertical (55mm x 22mm x 1500mm)
- IWAH - Internal Window Arch, Stops Horizontal (55mm x 22mm x 3600, 3800mm)

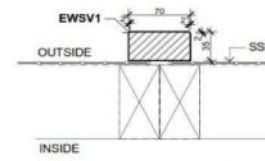
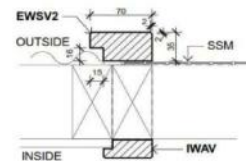
FIXING DETAIL

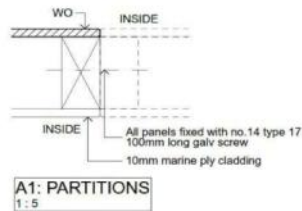
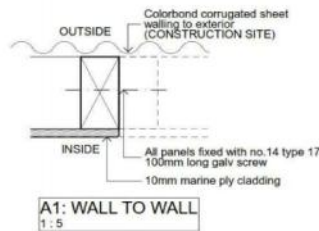
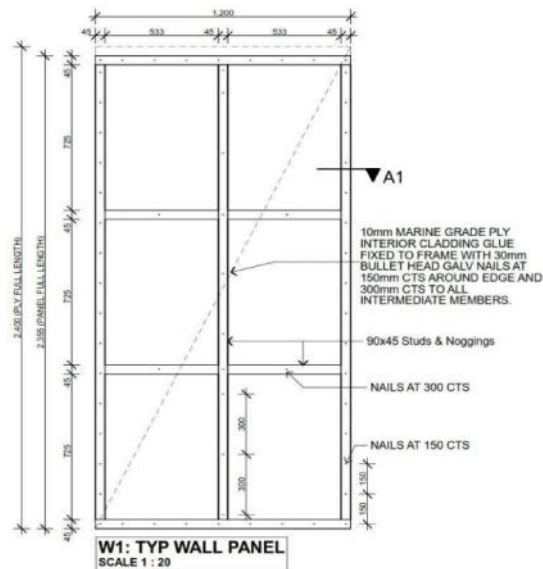
Fix all cover strips to stud with 40mm bullet head galv nails @300mm CTS.

PAINTING SCHEDULE:

By Supplier in Factory
- 1 coat oil-based wood primer

By Construction Contractor (Exposed surfaces ONLY)
- 1 coat oil-based undercoat - white
- 1 coat oil-based gloss paint - white





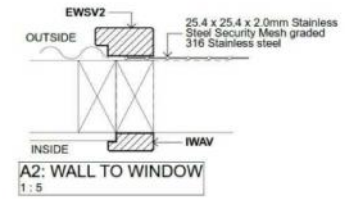
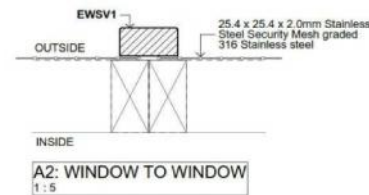
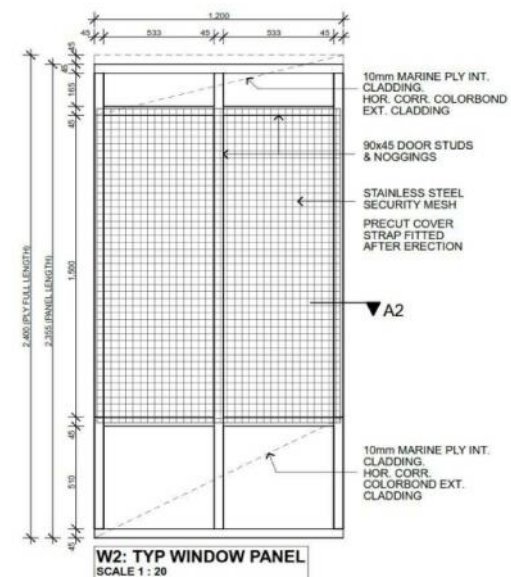
MEMBER SCHEDULE
CODE: MODULE DETAILS
WO - Wall Sheets opposite side (2400 x 1200 x 10mm)

PAINTING SCHEDULE:
By Supplier in Factory (Exposed surfaces ONLY)
- 1 coat oil-based wood primer
- 1 coat oil-based undercoat - white
By Construction Contractor (Exposed surfaces ONLY)
- 1 coat oil-based gloss paint - white

FOR INFORMATION ONLY

WALL PANEL

W1



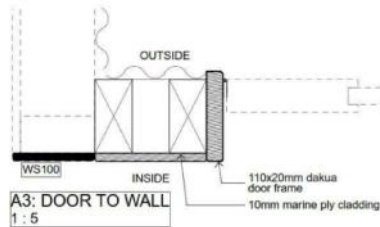
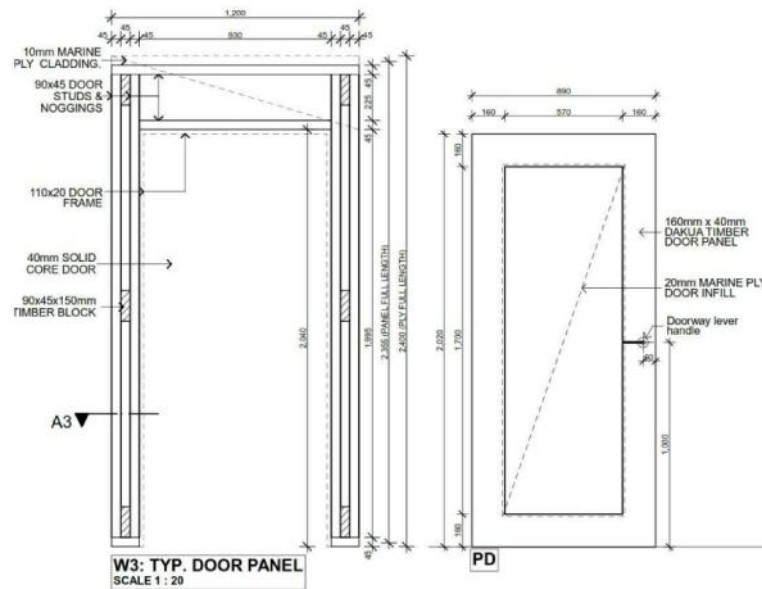
MEMBER SCHEDULE
CODE: MODULE DETAILS
EWSV1 - External Window Stops (70mm x 35mm x 1500mm Vertical)
EWSV2 - External Window Stops (70mm x 35mm x 2600mm Horizontal)
IWAV - Internal Window Arch's (55mm x 22mm x 1500mm Vertical)
90x45 TP Gauged Timber - STUDS & NOGGINGS
25x25x10mm Stainless Steel Mesh - Window Security Mesh
1200x2400x10mm Marine PLY - Wall Claddings

PAINTING SCHEDULE:
By Supplier in Factory (Exposed surfaces ONLY)
- 1 coat oil-based wood primer
- 1 coat oil-based undercoat - white
By Construction Contractor (Exposed surfaces ONLY)
- 1 coat oil-based gloss paint - white

FOR INFORMATION ONLY

WINDOW PANEL

W2



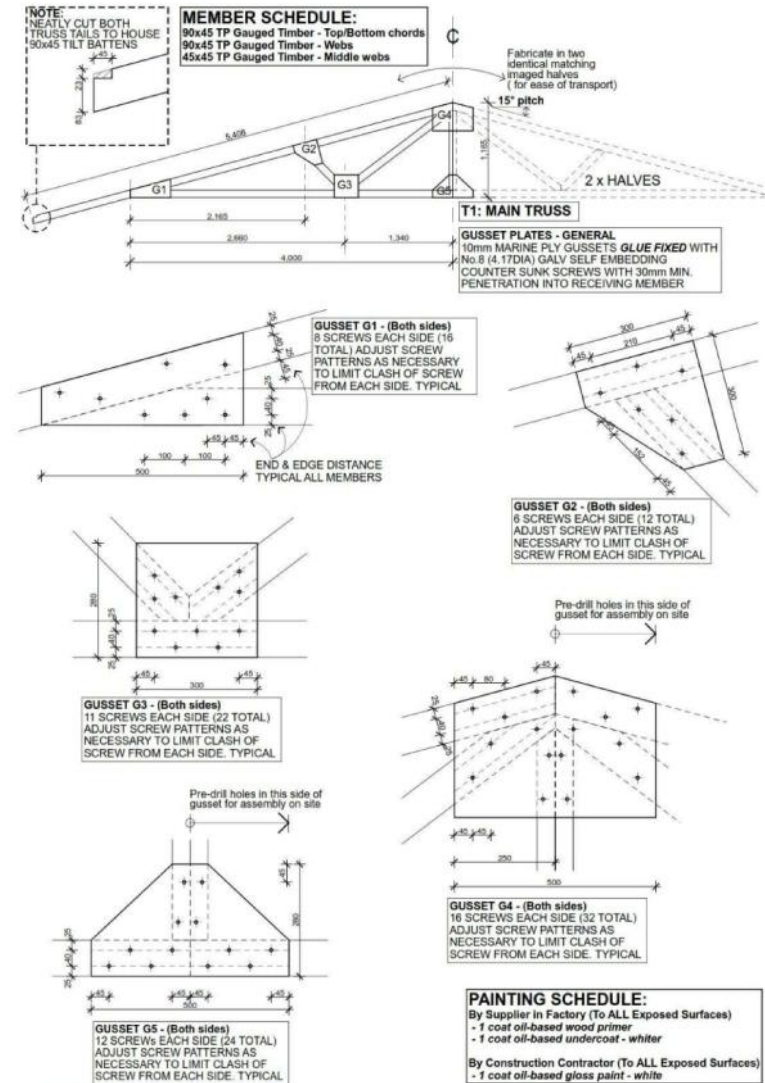
MEMBER SCHEDULE	
MODULE DETAILS	
WS 100	Door Wall Sheets Opp. Side (90mm x 2400mm, Arrased)
PD	Timber Frame Ply Panel Door (2020mm x 890mm x 40mm)

PAINTING SCHEDULE:	
By Supplier in Factory (Exposed surfaces ONLY)	
- 1 coat oil-based wood primer	
- 1 coat oil-based undercoat - white	
By Construction Contractor (Exposed surfaces ONLY)	
- 1 coat oil-based gloss paint - white	

FOR INFORMATION ONLY

DOOR PANEL

W3



FOR INFORMATION ONLY

MAIN TRUSS

T1

PAINTING SCHEDULE:	
By Supplier in Factory (To ALL Exposed Surfaces)	
- 1 coat oil-based wood primer	
- 1 coat oil-based undercoat - white	
By Construction Contractor (To ALL Exposed Surfaces)	
- 1 coat oil-based gloss paint - white	



GUSSET G4 - (Both sides)
 16 SCREWS EACH SIDE (32 TOTAL)
 ADJUST SCREW PATTERNS AS NECESSARY TO LIMIT CLASH OF SCREW FROM EACH SIDE. TYPICAL

GUSSET G5 - (Both sides)
 12 SCREWS EACH SIDE (24 TOTAL)
 ADJUST SCREW PATTERNS AS
 NECESSARY TO LIMIT CLASH OF
 SCREW FROM EACH SIDE. TYPICAL

FOR INFORMATION ONLY

T2



GUSSET G4 - (Both sides)
 16 SCREWS EACH SIDE (32 TOTAL)
 ADJUST SCREW PATTERNS AS NECESSARY TO LIMIT CLASH OF SCREW FROM EACH SIDE. TYPICAL

GUSSET G5 - (Both sides)
 12 SCREWS EACH SIDE (24 TOTAL)
 ADJUST SCREW PATTERNS AS NECESSARY TO LIMIT GLASH OF SCREW FROM EACH SIDE. TYPICAL

FOR INFORMATION ONLY

T3